

The Glenbio Ez-Cyto Thin Layer Processor



El futuro de la
citología líquida



Limpio

Fácil

Rápido

For Gyn or Non-gyn cytology screening

EZ-CYTO

THIN LAYER PROCESSOR

CE

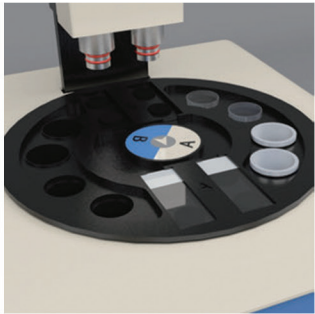
PROCEDURE



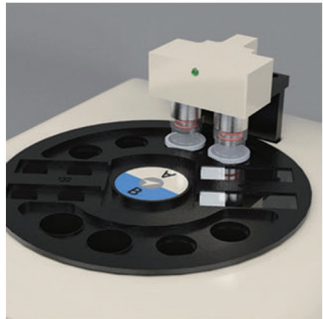
1. Collect cervical sample with brush.



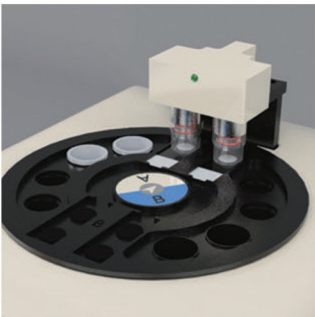
2. Rinse the sample into the vial, close the cap and send to lab.



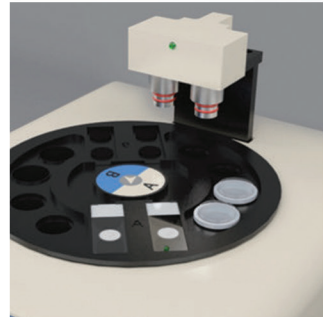
3. Install the Filter and sample cup, then pour in sample.



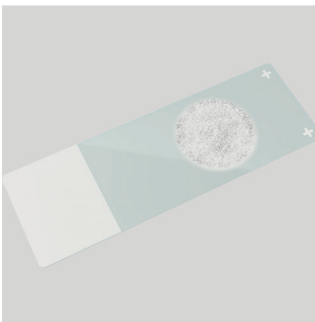
4. Filter and attach the cells on the membrane.



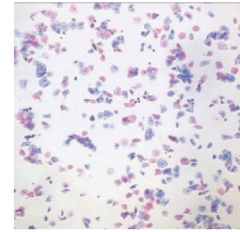
5. Transfer the cells to Slide.



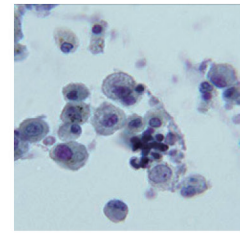
6. Thin-layer Pap Smear by diameter of 20mm, max 4 slides per time.



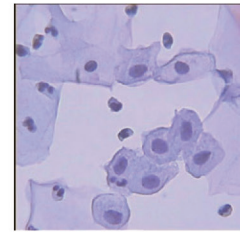
7. Thin-layer Pap Smear by diameter of 20mm, max 4 slides per time.



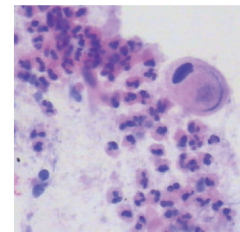
Cervical cells



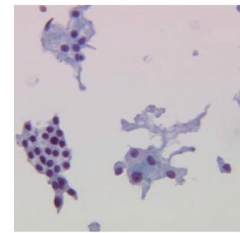
BAL



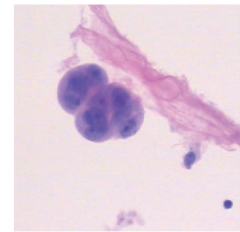
Urine cells



Sputum

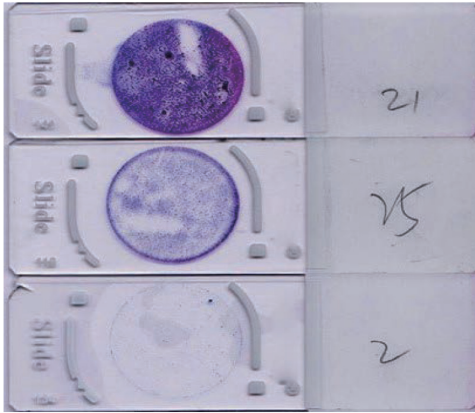


Thyroid FNA



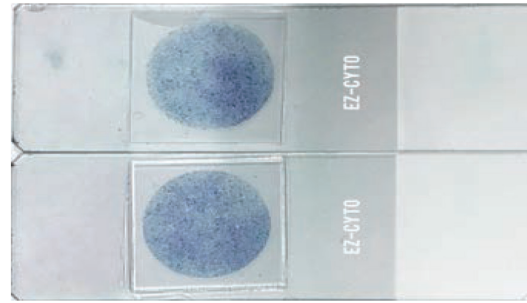
Pleural Fluid

THE BENEFITS ARE CLEAR



COMPETITOR SLIDES

Dirty background, hollow mucus, patchy image.



EZ-CYTO SLIDES

Clear background, full image and uniform.

SPECIFICATIONS

| | |
|-------------------|--|
| Sample Type | Gynecology (Cervical), Non-Gynecology (BAL, FNA, Sputum, Thyroid, Urine, etc.) |
| Channel | 4 Channels perform test at same time or separately |
| Technology | Liquid Based Dual Filter |
| Test Time | 4 Test for 40Sec. |
| Throughput | > 240 Tests/Hour |
| Power Supply | 220 VAC (50 / 60 Hz) |
| Power Consumption | 75 W Max |
| Display | 4.5 Inch LCD Touch Screen |
| Vacuum pump | 60KPa Max |
| Dimensions | 400 x 370 x 370 mm (w x d x h) |
| Weight | 20 Kg |

ORDERING

| CAT NO | DESCRIPTION | UNIT |
|--------|------------------------------|------|
| EC40 | EZ-CYTO Thin Layer Processor | EA |
| EC200 | EZ-CYTO kit 200 Tests | Box |
| EC400 | EZ-CYTO kit 400 Tests | Box |

Beyond Imagination

Distribuido por:
LABORATORIOS HEIGA S.L.
 C/Rocio Nave C3, Pol. Ind. Oeste
 Alcantarilla, Murcia 30820
 Tel: 968 895460
 Email: murcia@laboratoriosheiga.com



Diagnostics & Research Laboratory Solutions

Glenbio Ltd.
 10 Kilbegs Road
 Antrim, Co. Antrim
 BT41 4NN, United Kingdom
 t/f: +44(0)28 7965 9842
 e: info@glenbio.com
www.glenbio.com